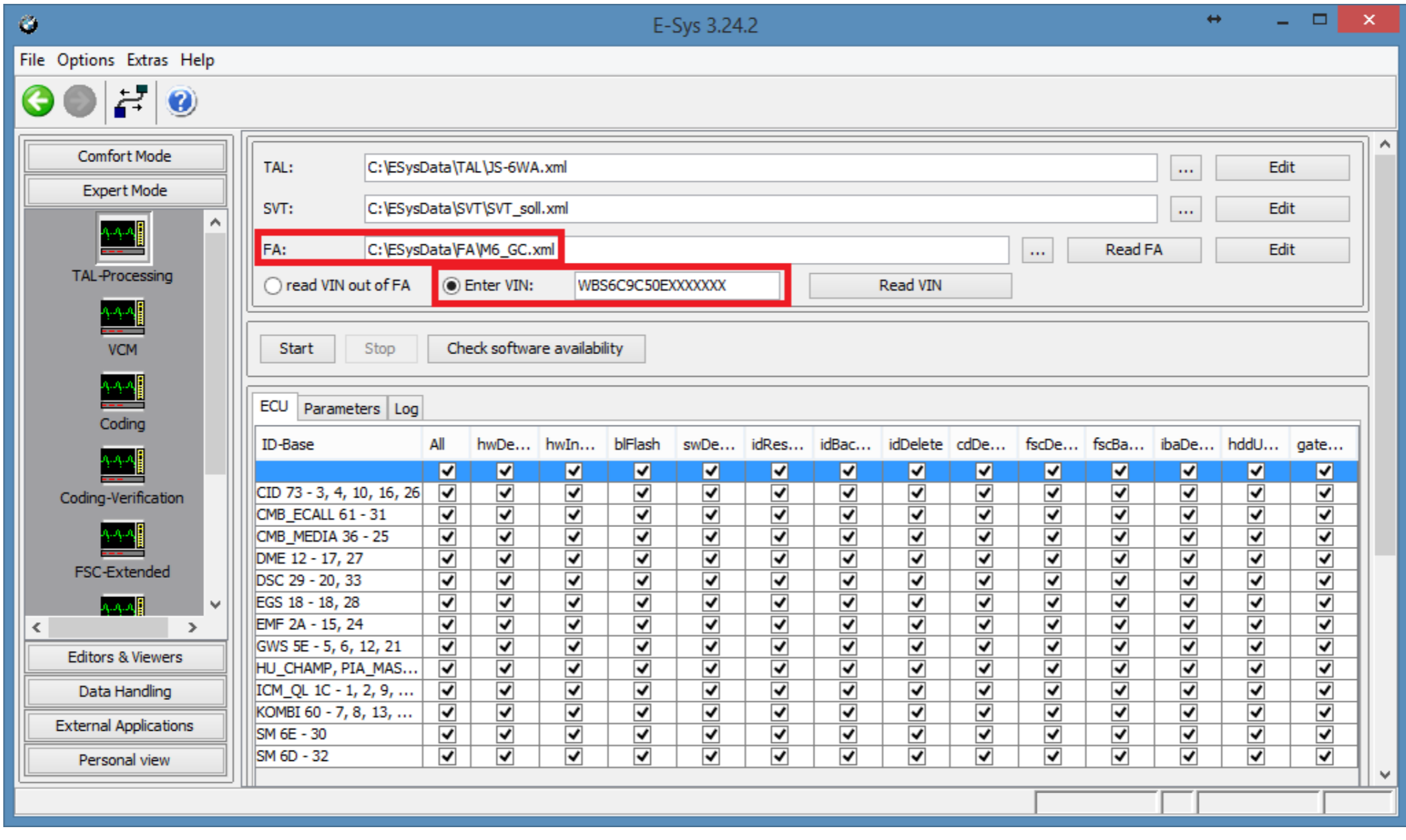


DOWNLOAD

[Esys Software Psdzdata Download](#)



[Esys Software Psdzdata Download](#)

DOWNLOAD

After codes are read, green icon will change into a folder icon
13- Read all the green CAFD files one by one or, select multiple by holding the Ctrl key of keyboard and read Coding data by right clicking.

g F025 and not F025_DIRECT, select 'connection via VIN' and press Connect 8- Select 'Expert Mode' on the left pane and click on 'Coding' button. 3- The laptop tries to connect to the car Wait a few minutes until the network icon on laptop shows a Connection with the yellow exclamation point over it.

3- Also copy Setup_3 18-4-47 4 v1 bat and EDIABAS INI files into the same folder. 9- In Vehicle Order Box (upper left), click on 'Read' button , it would display FA of your car. 8 GHz or higher- RAM: 256 MB of system memory- Hard Drive: 30 GB of available space- DVD-ROM BMW E-Sys is an engineering version of the software for programming, coding, electronic control units of new series BMW, which is required interface like BMW ENET cable or ICOM A2 emulator. What is coding? Coding is for people who want to play with the settings of BMW car software to achieve something more desirable.

How to perform CAFD files coding? 2- Expand the folder of any read CAFD of a module that you would like to edit with the changes as shown on the cheat file. Latest Software Links & Installation Instructions; NOTE1: URL Links are in BLUE and pictures are links to larger images. 5- Press connect button on top row of E-Sys to connect car with the laptop 6- Laptop opens up a popup, select the correct TargetSelector, e.

27 1 software to run with ENET cable or ICOM A2 diagnostic tool for characteristically coding BMW Fxx series F01 / F02 / F06 / F07 / F10 / F12 / F13 / F16 / F20 / F25 / F30 and so on. If BMWInstall folder is on external media, you will need on 22 GB of clear space on laptop. E-Sys Setup 3 30 0 (build 49694); not tested E-Sys May 24, 2018 May 24, 2018 auto Auto Software Download & Installation 0 What is BMW Psdzdata? The Psdzdata=ECU Data Files, is basically a pack that contains all the data needed for E-sys to be able to code a car, flash ecus and firmware update of the modules on the car. 10- Go to SVT Actual Box (right pane, midway down) and click on 'Read(VCM)' button. 2- Connect ENET cable between car's OBD port and network port of laptop 3- Switch on the ignition of the car, don't start the engine. These green CAFD files are of our interest 12- Right click on each green CAFD and click on 'Read Coding data'. IP Address, MAC Address, & VIN will be displayed in a separate window That shows that communication between car and laptop can be established with the used ENET cable. 4- Launch 'C:EDIABASHardware\ENETZGW_SEARCH.exe' to verify cable and connection are working. e10c415e6f